

**SOUTH MIDDLETON TOWNSHIP MUNICIPAL  
AUTHORITY**

**SEWER SYSTEM**

**GRINDER PUMP RESOLUTION**

**SOUTH MIDDLETON TOWNSHIP MUNICIPAL AUTHORITY  
CUMBERLAND COUNTY, PENNSYLVANIA**

RESOLUTION NO. 10-13-86

A RESOLUTION OF SOUTH MIDDLETON TOWNSHIP MUNICIPAL  
AUTHORITY AUTHORIZING THE USE OF GRINDER PUMPS AND  
ADOPTING CERTAIN RULES AND REGULATIONS FOR GRINDER PUMPS.

WHEREAS, this Authority owns and operates a complete sanitary sewage collection system ("Sewerage System") in certain portions of South Middleton Township, Cumberland County, Pennsylvania; and

WHEREAS, this Authority, in accordance with power vested in it by law, desires to establish rules and regulations concerning the installation and use of grinder pumps.

NOW, THEREFORE, BE IT RESOLVED, by the Board of South Middleton Township Municipal Authority as follows:

Section 1. The Authority hereby authorizes the installation and use of grinder pumps subject to (a) the provisions of this Resolution, (b) the approval of the Authority's consulting engineer, and (c) the approval of the Pennsylvania Department of Environmental Resources and any other governmental agency having jurisdiction.

Section 2. All grinder pumps shall comply with the Technical Specifications which are attached hereto, marked Exhibit "A" and made a part hereof.

Section 3. The Authority shall maintain in its possession, at all times, one complete grinder pump system (hereinafter referred to as the "spare grinder pump") for every ten (10) grinder pumps connected to its Sewerage System. The Authority reserves the right to require that a developer seeking approval to use grinder pumps provide such spare grinder pump at the developer's expense.

Section 4. The owner of the property served by a grinder pump shall have the responsibility for maintaining, operating, repairing, and replacing grinder pumps.

Section 5. Except for the spare grinder pump referred to in Section 3 of this Resolution, the Authority shall have no responsibility for the purchase, operation, repair or replacement of grinder pumps.

Section 6. The proper officers, employees and agents of this Authority are authorized and directed to do all acts which may be necessary and proper to implement this Resolution.

Section 7. This Resolution shall become effective immediately.

Section 8. In the event any provision, section, sentence, clause or part of this Resolution shall be held to be invalid, such invalidity shall not affect or impair any remaining provision, section, clause or part of this Resolution, it being the intent of this Authority that such remainder shall be and shall remain in full force and effect.

DULY ADOPTED this 13th day of October, 1986, by the Board of South Middleton Township Municipal Authority, in lawful session duly assembled.

SOUTH MIDDLETON TOWNSHIP  
MUNICIPAL AUTHORITY

By: John H. Paden  
Chairman

Attest: Robert B. Cosman  
Secretary

(SEAL)

CERTIFICATE

I, the undersigned, Secretary of South Middleton Township Municipal Authority (the "Authority"), certify that the foregoing is a true and correct copy of a Resolution which duly was adopted by majority vote of the entire Board of the Authority at a meeting of said Board duly convened according to law and held on October 13, 1986; said Resolution duly has been recorded in the minutes of the Board of the Authority; said Resolution remains in full force and effect, unaltered and unamended, as of the date of this Certificate.

IN WITNESS WHEREOF, I affix my hand and the official seal of the Authority this 13, day of October, 1986.

  
Secretary

ATTEST

TECHNICAL SPECIFICATIONS  
SIMPLEX GRINDER PUMP STATIONS

Myers Catalog No. BPC-2472-2Hp Grinder Pump Package  
Myers Catalog No. JIFP-400-24 Inlet Flange

A. GENERAL

Simplex units, containing one grinder pump and all necessary parts and equipment shall be installed in fiberglass reinforced polyester tanks for outside or inside installation. All equipment shall be factory installed, except for externally mounted control panel and gravity sewer inlet hubs which are to be installed in the field.

Each pre-assembled simplex station shall include the basin, a grinder pump and motor, junction box, start-stop level controls, motor high temperature shutoff, motor seal leak alarm, high water alarm, all internal wiring terminating into the junction box, shutoff valve and Schedule 80 PVC discharge piping and fittings. In addition, an external alarm and pump control panel is to be provided for each unit.

The complete grinder pump system shall be as manufactured by F.E. Myers Company a Division of McNeil Corporation.

B. GRINDER PUMP

1. Operating Conditions:

Pump shall have a shut-off head of 105 feet and a maximum capacity of 40 GPM with complete performance per curve sheet.

2. Pump:

Pump shall be of a centrifugal type Myers model WG20 with an integrally built in grinder unit and submersible type motor. The pump shall be suspended in the basin by 1-1/2" galvanized pipe connected to motor cap in such a way that solids are fed in an up-flow direction to the grinder impeller with no feet or other obstruction below the grinder inlet.

3. Motor:

Pump motor shall be of the submersible type rated 2 horsepower at 3450 RPM. Motor shall be single phase 230 volts.

4. Electrical Control Box For Simplex Pumps Single Phase:

All control elements shall be mounted in a NEMA 3R enclosure. Single phase power shall be 230 volt 3 wire neutral system. Control circuit shall be 115 volts.

Motor start and run capacitors and start relay shall be mounted in control box.

Motor shall be actuated by a magnetic contactor and a manual reset Klixon overload shall protect the motor against excessive current conditions.

A H-O-A switch, alarm switch, run light and overload reset button shall be mounted on the door.

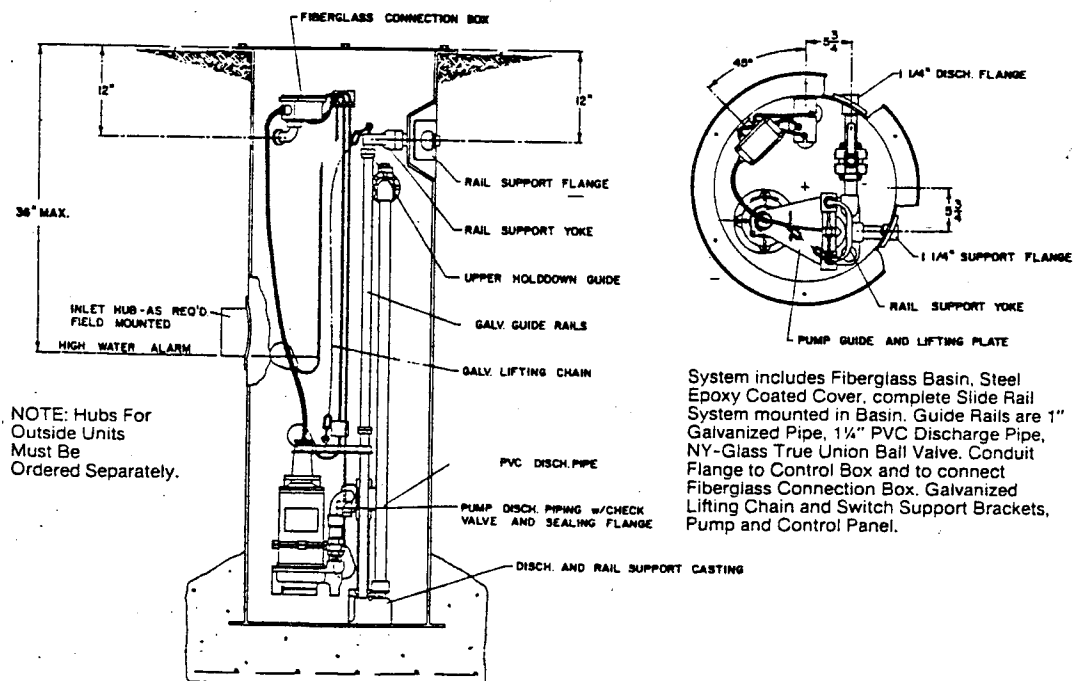
A terminal strip with box type connectors shall be supplied to make all power and control connections. All terminals shall be marked for easy identification. A ground terminal strip shall be provided.

ALARM - A high water level flashing red alarm light shall be mounted on outside of NEMA 3R enclosure. Alarm to be actuated by control as previously specified.

5. Level Controls:

Pump on and off levels are controlled by Myers Model FLCA mercury tube switch sealed in solid polyurethane float ball.

Two controls are used for simplex system with a third control for actuating the alarm.



System includes Fiberglass Basin, Steel Epoxy Coated Cover, complete Slide Rail System mounted in Basin. Guide Rails are 1" Galvanized Pipe, 1/4" PVC Discharge Pipe, NY-Glass True Union Ball Valve, Conduit Flange to Control Box and to connect Fiberglass Connection Box. Galvanized Lifting Chain and Switch Support Brackets, Pump and Control Panel.