

SOUTH MIDDLETON TOWNSHIP MUNICIPAL AUTHORITY
CUMBERLAND COUNTY, PENNSYLVANIA

RESOLUTION NO. 11-14-11-2

A RESOLUTION OF THE SOUTH MIDDLETON TOWNSHIP
MUNICIPAL AUTHORITY AUTHORIZING THE USE OF GRINDER
PUMPS, ADOPTING RULES AND REGULATIONS WITH RESPECT
THERE TO AND REPEALING RESOLUTION NO. 10-13-86

WHEREAS, South Middleton Township Municipal Authority (The "Authority") owns and operates a municipal sanitary sewage collection system (the "Sewerage System") in South Middleton Township, Cumberland County, Pennsylvania; and

WHEREAS, the Board of the Authority, in accordance with the power vested in it by law, desires to establish rules and regulations concerning the installation and use of grinder pumps for residential and non-residential applications.

NOW THEREFORE, BE IT RESOLVED by the Board of the South Middleton Township Municipal Authority as follows:

SECTION 1. Residential Grinder Pumps. The Authority hereby authorizes the installation and use of grinder pumps for residential properties subject to: (a) the provisions of this Resolution; (b) approval of the Authority's consulting engineer; and (c) the approval of the Pennsylvania Department of Environmental Protection and any other governmental agency having jurisdiction thereof.

- A. All residential grinder pumps shall comply with the technical specifications that are attached hereto and incorporated by reference herein as "Exhibit A".
- B. The Authority shall maintain in its possession, at all times, one complete grinder pump system (hereinafter referred to as the "spare grinder pump") for every ten (10)

residential grinder pumps connected to its Sewerage System. The Authority reserves the right to require that a developer seeking approval to use a residential grinder pump provide such spare grinder pump at the developer's expense.

- C. The owner of the property served by a residential grinder pump shall at said owner's expense, have the responsibility for maintaining, operating, repairing, and replacing residential grinder pump.
- D. Except for the spare grinder pump referred to in Section 1.B of this Resolution, the Authority shall have no responsibility for the purchase, operation, repair or replacement of residential grinder pumps.

SECTION 2. Non-Residential Grinder Pumps. The Authority hereby authorizes the installation and use of grinder pumps for non-residential properties subject to: (a) the provisions of this Resolution; (b) approval of the Authority's consulting engineer; and (c) the approval of the Pennsylvania Department of Environmental Protection and any other governmental agency having jurisdiction thereof.

- A. All non-residential grinder pumps shall comply with the technical specifications as approved by the Operations Manager and the Authority's consulting engineer.
- B. The owner of property served by a non-residential grinder pump shall at said owner's expense, have the responsibility for maintaining, operating, repairing and replacing the non-residential grinder pump.
- C. The Authority shall have no responsibility for the purchase, operation, repair or replacement of non-residential grinder pumps.

SECTION 3. Implementing of Resolution. The proper officers, employees and agents of this Authority are authorized and directed to do all acts which may be necessary and proper to implement this Resolution.

SECTION 4. Effective Date. This Resolution shall become effectively immediately.

SECTION 5. Severability in the Event of Invalidity. In the event any provision, section, sentence, clause of part of this Resolution shall be held to be invalid, such invalidity shall not affect or impair any remaining provision, section, clause or part of this Resolution, it being the intent of this Authority that such remainder shall be and shall remain in full force and effect.

SECTION 6. Repeal. Resolution No. 10-13-86 is hereby repealed.

RESOLVED this 14th day of November, 2011 in public session duly assembled.

South Middleton Township Municipal Authority

By: Rowald P. Harman
(Vice) Chairman

ATTEST:

David L. Allen
Ass't. Secretary

(Authority Seal)

TECHNICAL SPECIFICATIONS
SIMPLEX GRINDER PUMP STATIONS

Myers Catalog No. BPC-2472-2Hp Grinder Pump Package
Myers Catalog No. JIFP-400-24 Inlet Flange

A. GENERAL

Simplex units, containing one grinder pump and all necessary parts and equipment shall be installed in fiberglass reinforced polyester tanks for outside or inside installation. All equipment shall be factory installed, except for externally mounted control panel and gravity sewer inlet hubs which are to be installed in the field.

Each pre-assembled simplex station shall include the basin, a grinder pump and motor, junction box, start-stop level controls, motor high temperature shutoff, motor seal leak alarm, high water alarm, all internal wiring terminating into the junction box, shutoff valve and Schedule 80 PVC discharge piping and fittings. In addition, an external alarm and pump control panel is to be provided for each unit.

The complete grinder pump system shall be as manufactured by F. E. Myers Company, a Division of Pentair Corporation.

B. GRINDER PUMP

1. Operating Conditions:

Pump shall have a shut-off head of 105 feet and a maximum capacity of 40 GPM with complete performance per curve sheet.

2. Pump:

Pump shall be of a centrifugal type Myers model WG20 with an integrally built-in grinder unit and submersible type motor. The pump shall be installed in the basin with a lift out system which includes a base elbow assembly with lift out check valve, upper guide brackets, stainless steel lifting chain and 1-inch (1") stainless steel guide rails in such a way that solids are fed in an up-flow direction to the grinder impeller with no feet or other obstruction below the grinder inlet.

3. Motor:

Pump motor shall be of the submersible type rated 2 Hp at 3450 RPM. Motor shall be a single-phase 230 volts.

4. Electrical Control Box For Simplex Pumps Single-Phase:

All control elements shall be mounted in a NEMA 3R enclosure. Single-phase power shall be 230 volt 3 wire neutral system. The control circuit shall be 115 volts.

The motor start and run capacitors, and the start relay shall be mounted in the control box.

The motor shall be actuated by a magnetic contactor, and a manual reset Klixon overload shall protect the motor against excessive current conditions.

An H-O-A switch, alarm switch, run light, and overload reset button shall be mounted on the door.

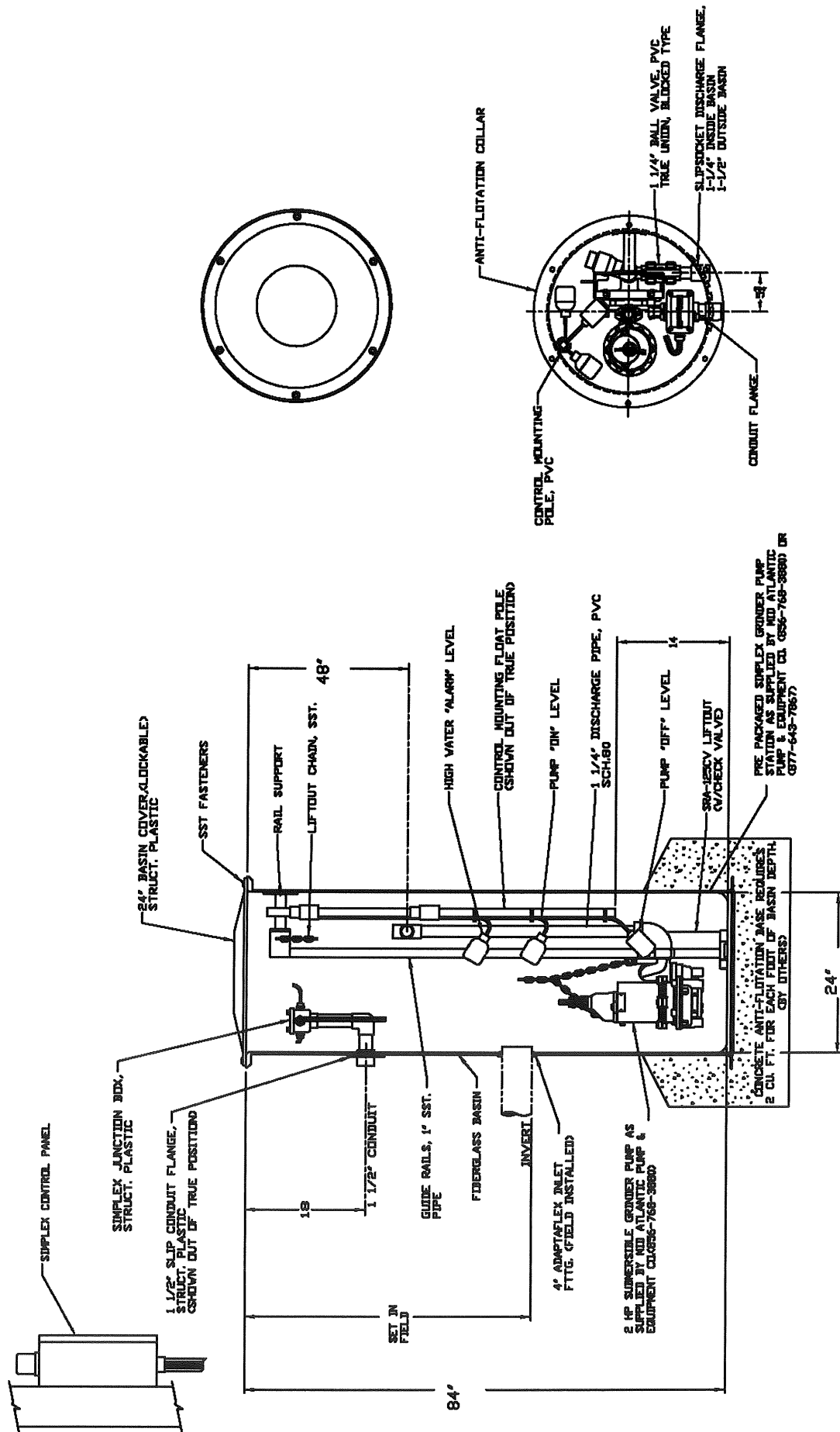
A terminal strip with box-type connectors shall be supplied to make all power and control connections. All terminals shall be marked for easy identification. A ground terminal strip shall be provided.

ALARM – A high water level flashing red alarm light shall be mounted on the outside of the NEMA 3R enclosure. The alarm is to be actuated by control as previously specified.

5. Level Controls:

Pump on and off levels are controlled by Myers Model FLCA mercury tube switch sealed in solid polyurethane float ball.

Two controls are used for the simplex system with a third control for actuating the alarm.



TS - 3
Exhibit "A"